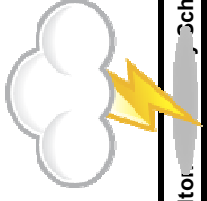




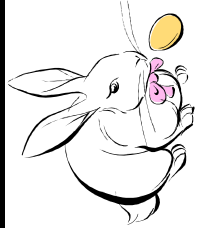
April Breakfast



Dalton Elementary School		Menu Subject to Change Without Notice			Dalton Elementary School	
Monday	Tuesday	Wednesday	Thursday	Friday		
Spring Recess No School	Spring Recess No School	Spring Recess No School	Egg/Cheese/Sausage Bagel Whole Bagel 1/2 Bagel W/Cereal Cereal Milk/Juice	Spring Recess No School	Spring Recess No School	2
5	6	7	8	9		
Pot Tart/Cereal Whole Bagel 1/2 Bagel W/Cereal Cereal Milk/Juice	Pancake W/Sausage Whole Bagel 1/2 Bagel W/Cereal Cereal Milk/Juice	Egg/Cheese Bagel Whole Bagel 1/2 Bagel W/Cereal Milk/Juice	Whole Bagel 1/2 Bagel W/Cereal Cereal Milk/Juice	Egg Pattie W/Sausage 1/2 Bagel Whole Bagel 1/2 Bagel W/Cereal Milk/Juice		16
12	13	14	15	16		
French Toast W/Sausage 1/2 Bagel W/Cereal Bagel Cereal Milk/Juice	Pop Tart W/Cereal Whole Bagel 1/2 Bagel W/Cereal Cereal Milk/Juice	Pancake W/Sausage Whole Bagel 1/2 Bagel W/Cereal Cereal Milk/Juice	Whole Bagel 1/2 Bagel W/Cereal Cereal Milk/Juice	Waffles W/Sausage Whole Bagel 1/2 Bagel W/Cereal Cereal Milk/Juice		23
19	20	21	22	23		
Egg Pattie W/Sausage Whole Bagel 1/2 Bagel W/Cereal Cereal Milk/Juice	French Toast W/sausage and 1/2 Bagel Bagel 1/2 Bagel W/Cereal Cereal/Milk/Juice	Whole Bagel Bagel 1/2 Bagel W/Cereal Cereal Milk/Juice	Waffles W/Sausage Bagel 1/2 Bagel W/Cereal Cereal Milk/Juice	Whole Bagel 1/2 Bagel W/Cereal Cereal Milk/Juice		30
26	27	28	29	30		

NO CHARGING

Happy Easter



Attention Parents & Guardians:

*You are allowed to prepay
for your students breakfast
and lunch in advance

Price List

* Breakfast \$1.25
* Milk .45
* Juice .40